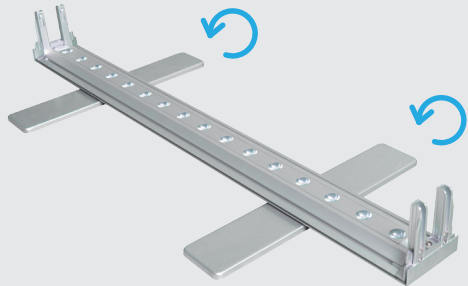


# INSTRUCTION FOR INSTALLATION

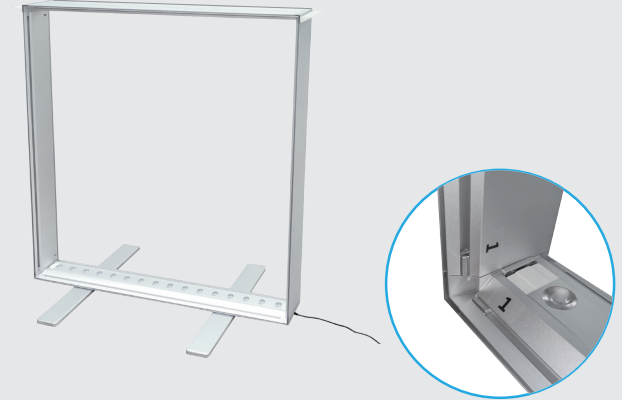
① Make the feet rotate 90°



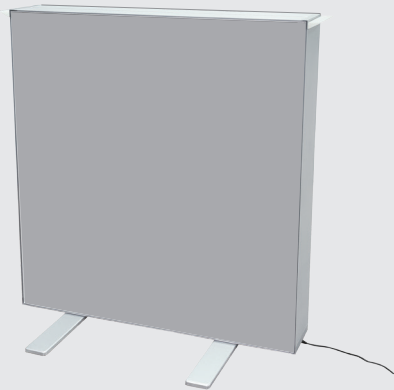
② Connect the transformer



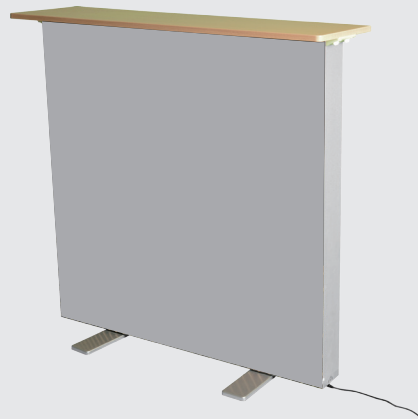
③ Match the same number together to connect correctly



⑤ Put on graphics



⑥ Put the board on the right location



⑦ Rotate the key in clockwise to lock together



⑧ Connect the power cable then plug in



Disassemble in the reverse order.  
Caution: Make sure the graphic is folded neatly and save it in bag after using, to avoid wrinkle.

PLEASE CONTACT US IF THERE IS ANY QUESTIONS.